



Surface dressing

This summer we'll be surface dressing your road as part of our ongoing commitment to maintaining and improving North Somerset's roads.

What is surface dressing?

Surface dressing is a road treatment that extends the life of a road, protects it from water damage and enhances the skid resistance of the road surface – improving road safety.

We surface dress roads where the structure is sound but the surface has started to deteriorate – treating them now means we can stop them getting any worse and needing a much more expensive repair in the future. We carry out surface dressing in the summer as the materials we use work better in warm weather.

The process

Before the surface dressing takes place we'll visit your road to carry out preparation works – repairing potholes, removing vegetation or debris from the side of the road, removing any cat's eyes and masking manhole covers or gullies.

We'll then return a few weeks later to carry out the surface dressing. The road will be sprayed with bitumen and covered with gritstone chippings which get rolled into the surface.

There'll be excess chippings left afterwards – this is normal. We'll sweep them up within 48 hours and then sweep them again twice more within the next 28 days.

We'll come back to reinstate any road markings once we're happy with the finished road surface.



How do I find out when my road's being treated?

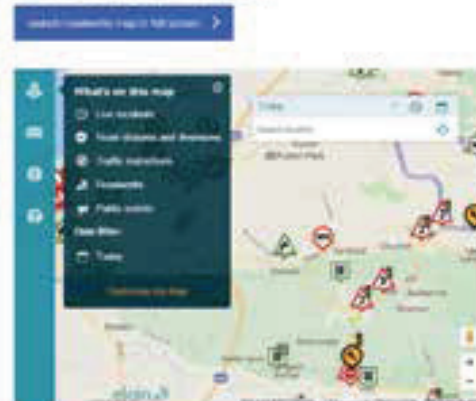
Visit our interactive map at www.n-somerset.gov.uk/roadworks where you can see when works are due to take place on your road and how long for.

We'll also put advance warning signs at each location – before the preparation works and again before the surface dressing is due to take place.

Please be aware that surface dressing is weather dependent, so our scheduled dates may change if the weather is bad or even if it's too hot.

Current and future roadworks

See all current and future roadworks carried out by utility companies across the district. The map shows current and planned roadworks across the area.



What do I need to do?

Please avoid parking on the road before the works are due to take place and move any vehicles by 8am otherwise we won't be able to carry out the works.

After the road's been treated we'll put signs up advising drivers to stick to 20mph – this helps the chippings bed-in and minimises the risk of them damaging paint work or other road users. If the weather's very warm the bitumen can become fluid and the chippings can easily be picked up on footwear, wheelchairs, pushchairs or pets' paws – it's best to avoid walking or driving on the road, and keep children and pets away from the treated areas.



Find out when works are happening near you by visiting www.n-somerset.gov.uk/roadworks or check the signage on your road.



www.n-somerset.gov.uk/roadworks • 01275 888 802

 /NorthSomersetCouncil

 @NorthSomersetC #investinginroads

This publication is available in large print, Braille or audio formats on request. Help is also available for people who require council information in languages other than English.